

# MERRI CREEK MANAGEMENT COMMITTEE

## STRUCTURE

Merri Creek Management Committee is a not-for-profit incorporated association. Current members of the Committee are:

- Darebin Council,
- Hume Council,
- Mitchell Shire,
- Moreland Council,
- Whittlesea Council,
- Yarra Council,
- Friends of Merri Creek Inc (FoMC),
- Wallan Environment Group Inc. (*formerly Friends of Wallan Creek*)

These member groups provide representatives (directors) to the Committee of Management, which meets quarterly, as follows:

- Two representatives each from the Councils of Darebin, Hume, Moreland, Whittlesea, Yarra City and Mitchell Shire (by convention one council officer and one Councillor);
- Six representatives from the Friends of Merri Creek (FoMC);
- One representative from the Wallan Environment Group.

The Committee of Management currently has four standing Sub-Committees:

- Executive Sub-Committee (officer bearers) – meets nine times a year;
- Finance Sub-Committee (treasurer, accountancy expert, ex-officio manager, finance officer) – meets quarterly;
- Merri Creek & Environs Strategy Implementation Sub-Committee (council officers & Friends of reps) - meets as needed;
- Merri Creek Environment Fund – meets at least twice yearly.

The Merri Creek Environment Fund, a tax -deductible gift fund, administered by Merri Creek Management Committee, has its own sub-committee members.

The management structure and staffing arrangements of the Merri Creek Management Committee are illustrated in the structure diagrams (over page).

### Office bearers for 2022 are:

President	Ann McGregor (FoMC)
Vice-President (1)	Tim Connell (Whittlesea)
Vice-President (2)	Nicole Lowe (FoMC)
Secretary/Treasurer	Damien Harrison (Hume)

## Merri Creek Management Committee

Municipalities of Darebin, Hume, Mitchell, Moreland,  
Whittlesea & Yarra;

Friends of Merri Creek, Wallan Environment Group

### Merri Creek & Environs Strategy Implementation Sub-Committee

Council officers,  
Friends groups' Reps

### Executive Sub-Committee

President,  
Vice-presidents (2), Secretary,  
Treasurer

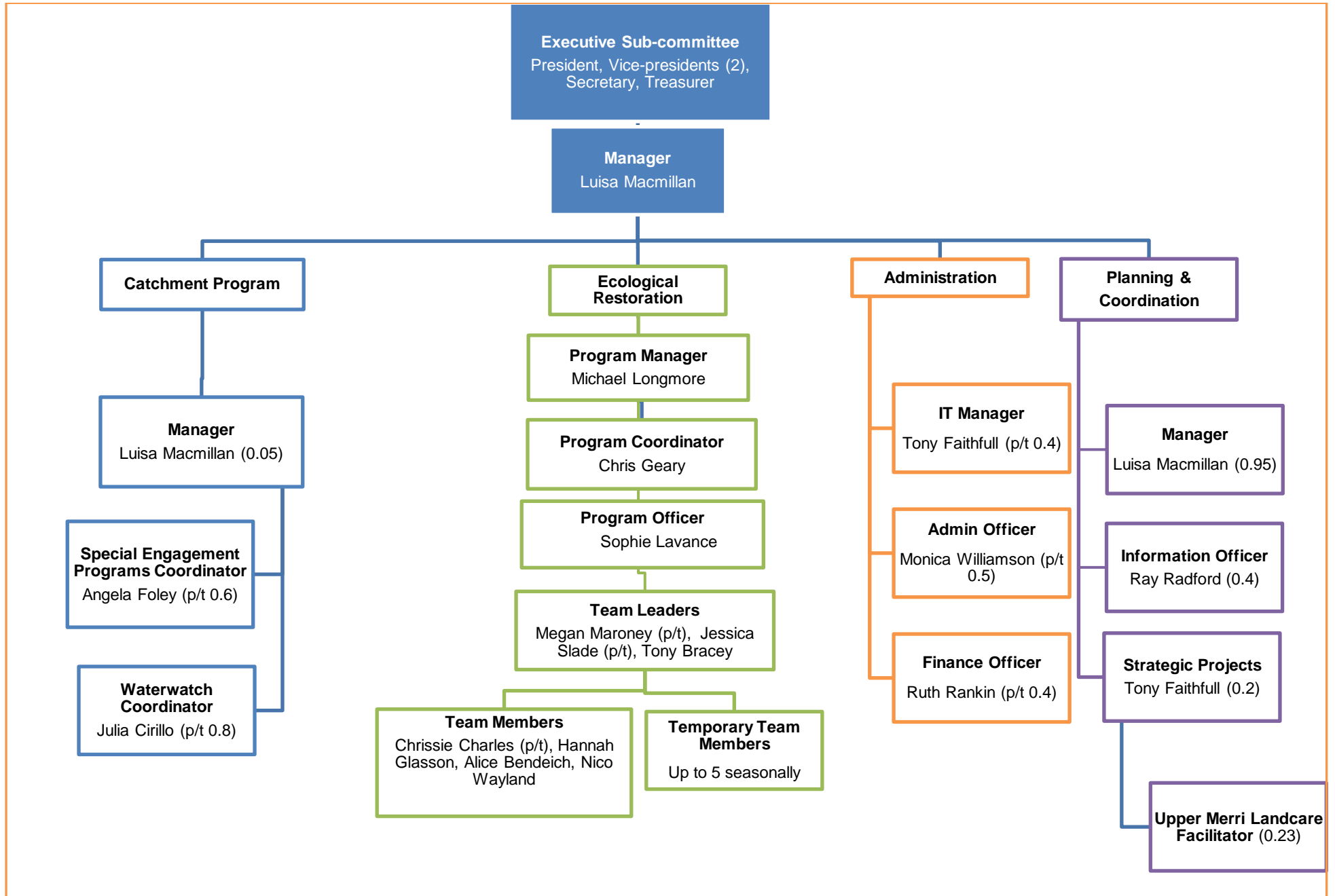
### Finance Sub-committee

Treasurer,  
Accountancy expert

### Merri Creek Environment Fund Sub-Committee

Public tax-deductible fund on  
the Register of Environmental  
Organisations.

Administered by four members  
with requisite degree of  
responsibility to the  
community as a whole.



MERRI CREEK MANAGEMENT COMMITTEE

